

FIG. 22

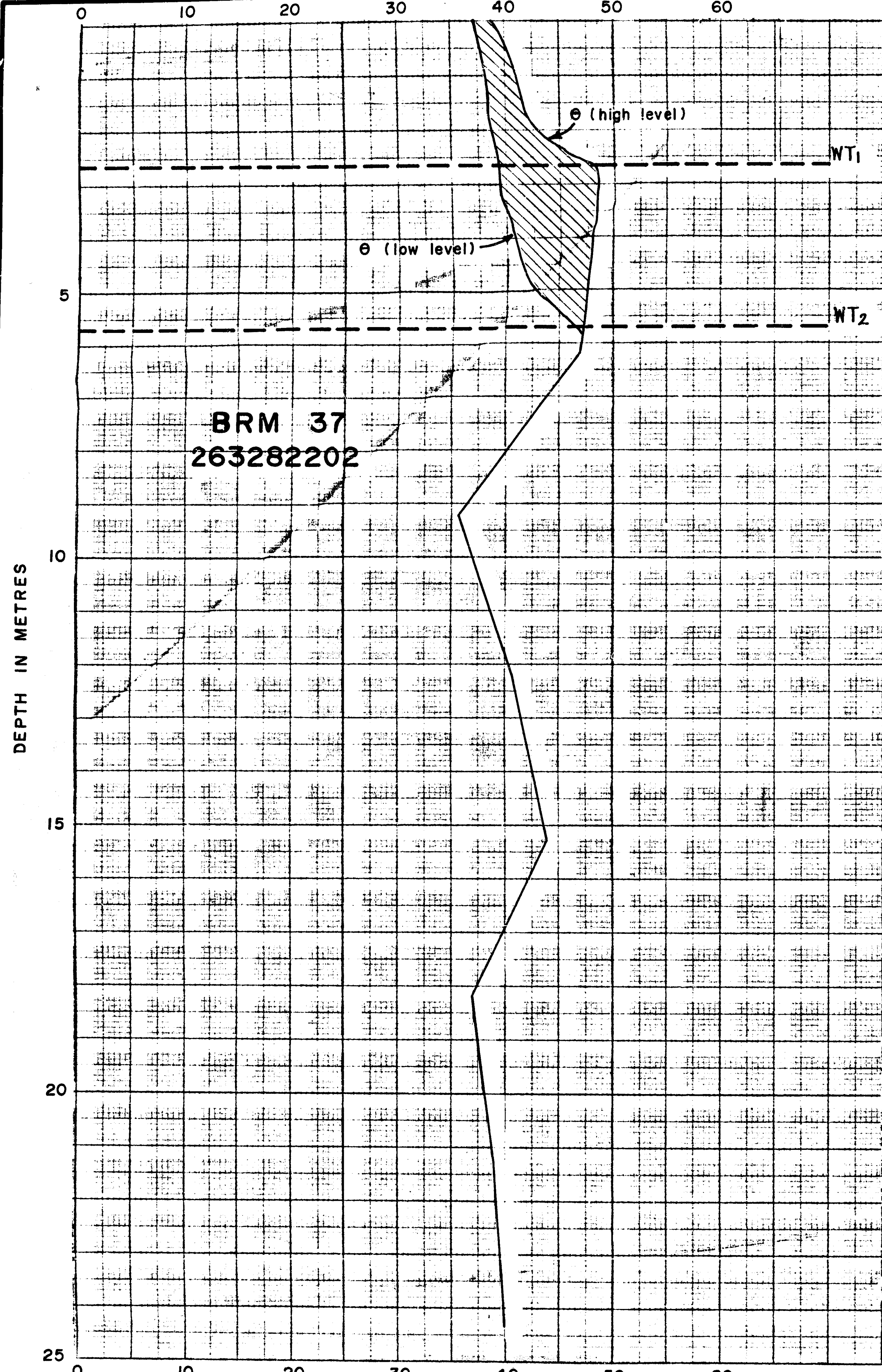
DEPARTMENT OF MINES - SOUTH AUSTRALIA

ANGAS - BREMER IRRIGATION AREA

UNCONFINED AQUIFER

DEPTH TO WATER TABLE - AUGUST 1976

ENGINEERING DIVISION	COMPILED: J.D.W.	DRN R.H.	SCALE 1:50 000	PLAN NUMBER
DIRECTOR OF MINES		OKD	DATE Nov. 1977	78-122



$$\theta = \% \text{ WATER CONTENT } \left(\frac{\text{VOL. OF WATER}}{\text{VOL. OF ROCK}} \right)$$

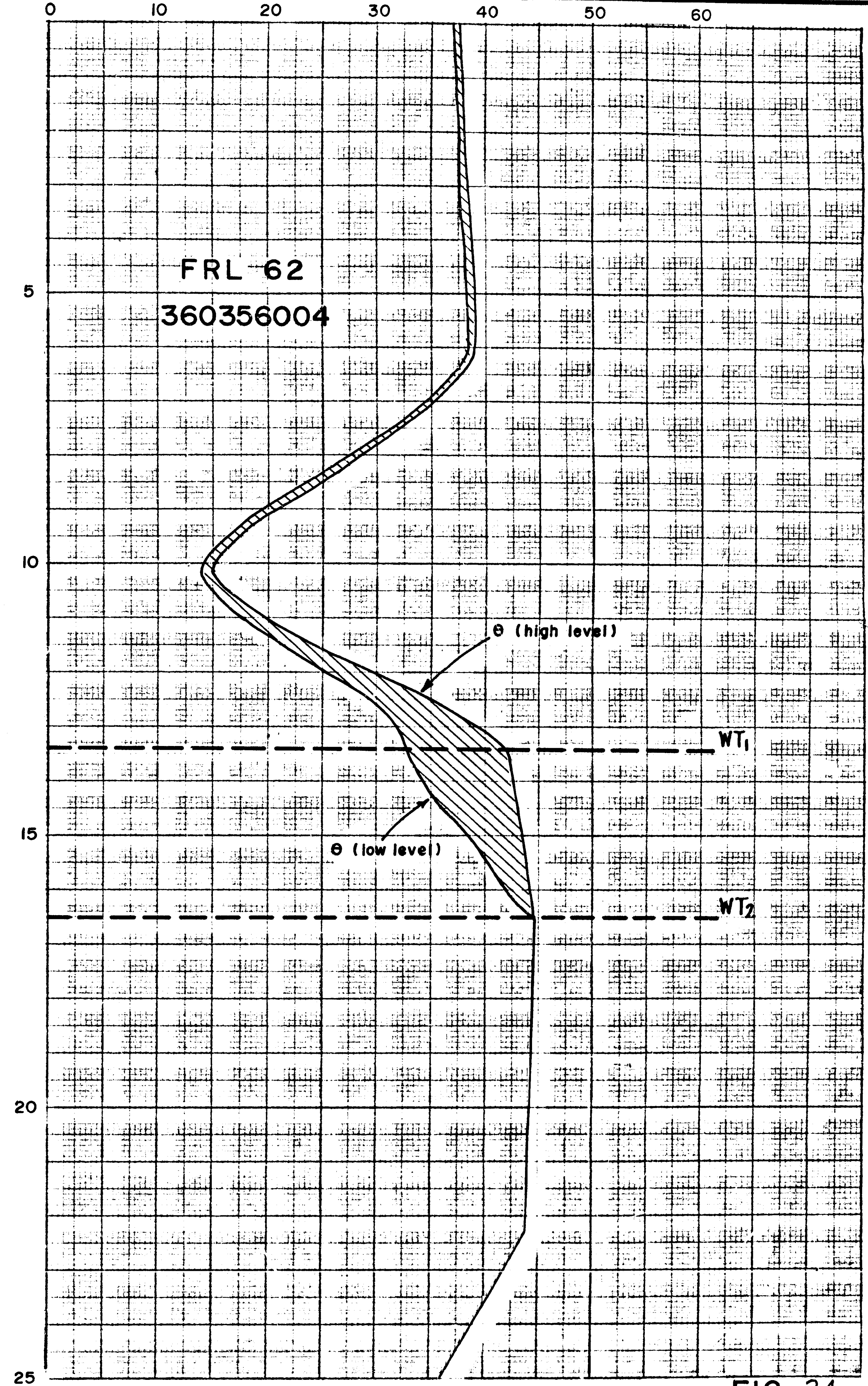


FIG. 24

ENGINEERING DIVISION	DEPARTMENT OF MINES - SOUTH AUSTRALIA	SCALE -
COMPILED: J.S.	ANGAS - BREMER IRRIGATION AREA	DATE: NOV. 1977
DRN. R.H. CKD.	WATER CONTENT Vs DEPTH BRM 37 AND FRL 62	PLAN NUMBER 78-139

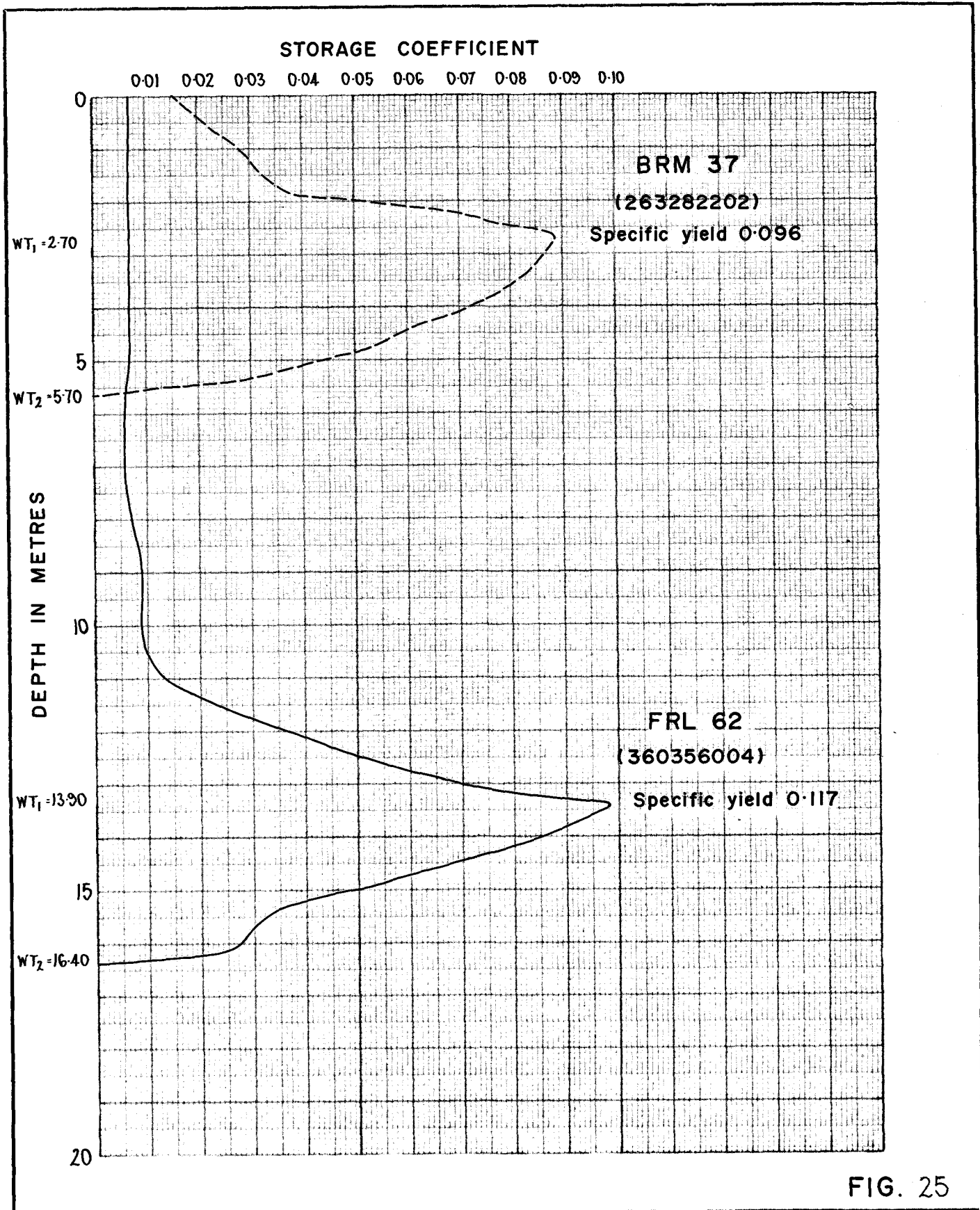


FIG. 25

ENGINEERING DIVISION	DEPARTMENT OF MINES - SOUTH AUSTRALIA	Scale: -
Compiled: J.S.	ANGAS - BREMER IRRIGATION AREA	Date: NOV. 1977
Drn. R.H. Ckd.	WATER CONTENT DIFFERENCES FOR A CHANGE IN WATER TABLE OF 3 METRES BRM 37 AND FRL 62	Drg. No. S13236

LOCALITY PLAN

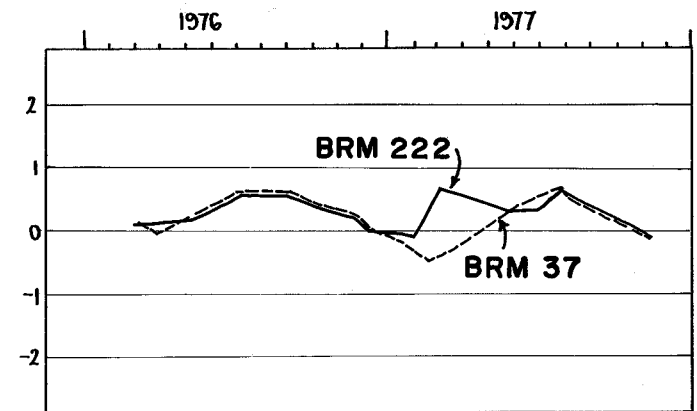
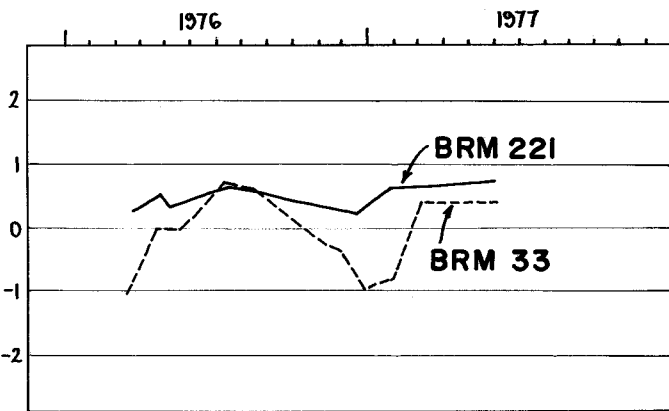
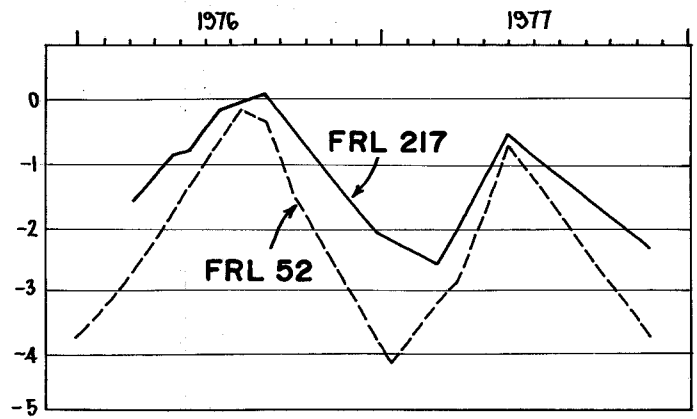
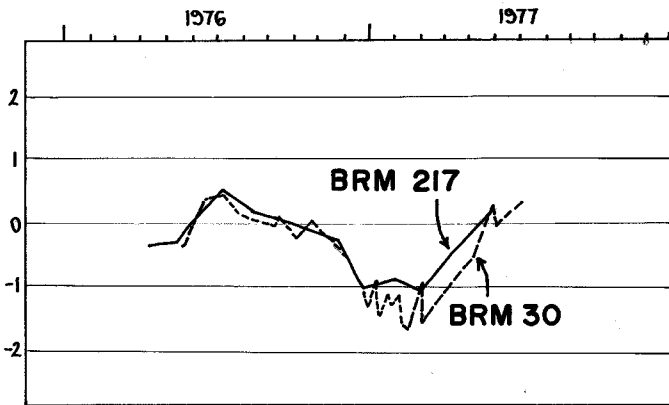
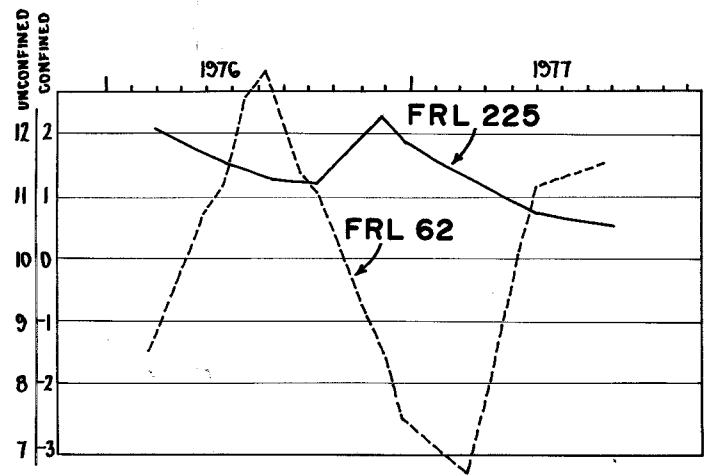
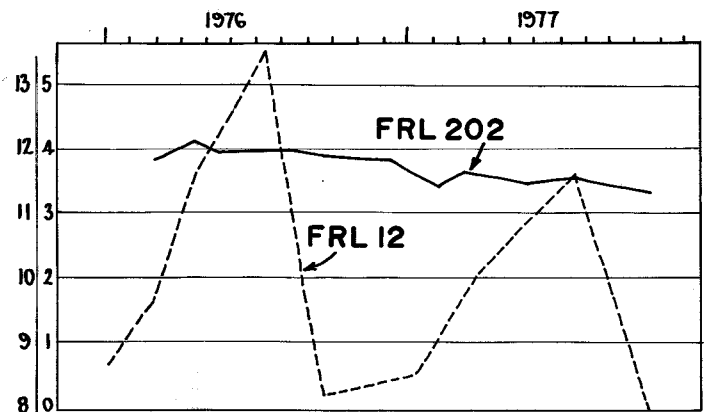
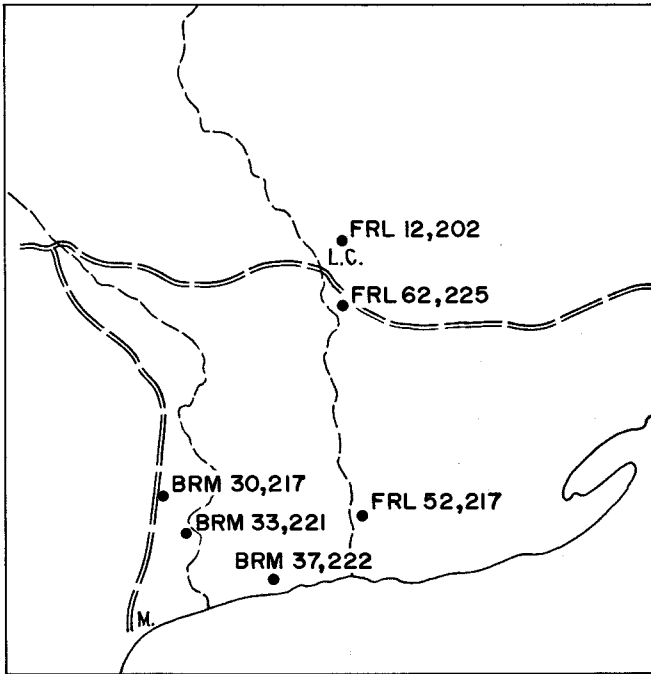


FIG. 26

ENGINEERING DIVISION

DEPARTMENT OF MINES - SOUTH AUSTRALIA

SCALE: -

COMPILED: J.D.W.

ANGAS - BREMER IRRIGATION AREA

DATE: NOV. 1977

DRN: R.H. CKD:

CONFINED AND ADJACENT UNCONFINED
AQUIFER WELL HYDROGRAPHS

PLAN NUMBER:

S13234