

Water Resources Branch
DATA FILE
0 DF 3.046



Volume I

THE HYDROGEOLOGY OF THE
ANGAS-BREMER IRRIGATION AREA

by

J.D. WATERHOUSE
J.A. SINCLAIR
N.Z. GERGES

Department of Mines and Energy
South Australia —

DEPARTMENT OF MINES AND ENERGY
SOUTH AUSTRALIA

GEOLOGICAL SURVEY
ENGINEERING DIVISION

THE HYDROGEOLOGY OF THE ANGAS-BREMER IRRIGATION AREA

by

J.D. WATERHOUSE
GEOLOGIST

and

J.A. SINCLAIR
STUDENT GEOLOGIST

and

N.Z. GERGES
TECHNICAL ASSISTANT

14th February, 1978

Rept.Bk.No. 78/8
G.S. No. 5982
Eng. No. 76/77
D.M. No. 734/74
229/68
1291/68
1073/69

VOLUME I

<u>CONTENTS</u>	<u>PAGE</u>
ABSTRACT	1
INTRODUCTION	2
DESCRIPTION OF AREA	3
GEOLOGY	4
CLIMATE	6
AGRICULTURAL PRACTICES	8
SURFACE WATER RESOURCES	9
GROUNDWATER RESOURCES	11
THE UNCONFINED AQUIFER SYSTEM	11
THE CONFINED AQUIFER SYSTEM	14
THE RELATIONSHIP BETWEEN THE AQUIFERS	19
ESTIMATION OF RECHARGE FROM THE ANGAS AND BREMER RIVERS	20
WATER BUDGET	22
CONFINED AQUIFER SALINITY CHANGES	25
HYDROCHEMISTRY	35
TRITIUM STUDIES	35
WATER WELL DATA STUDY	36
POLLUTION POTENTIAL	37
MANAGEMENT OF THE WATER RESOURCES	38
RECOMMENDATIONS	40
CONCLUSIONS	42
ACKNOWLEDGEMENTS	44
REFERENCES	45

APPENDICES

<u>No.</u>	<u>Title</u>
1	Geology and geological history
2	Calculation of storage characteristics of the unconfined aquifer
3	Estimation of vertical leakage from the unconfined aquifer
4	Recalculation of aquifer test data
5	Estimation of water consumption of irrigated crops
6	Discussion of the groundwater system prior to the commencement of major irrigation
7	Statistical treatment of salinity data
8	Hydrochemistry of surface water and groundwater

TABLES

<u>No.</u>	<u>Title</u>	<u>Page</u>
1	Stratigraphic and Hydrogeological Summary	5
2	Average monthly and annual rainfall	7
3	Average monthly and annual pan evaporation	7
4	Summary of aquifer test results	15
5	Components of lateral flow in confined aquifer	18
6	Summary of water well data, October 1976	36

ILLUSTRATIONS

<u>No.</u>	<u>Title</u>
1	Sprinkler irrigation of pasture
2	Vineyards on flanks of Bremer River
3	Stock water supply pumped by a windmill from confined aquifer
4	Drowned mouth of River Angas
5	Sandy bed of Bremer River in recharge zone
6	Water ponding in lower reaches of the River Angas during a flow recession
7	Elevated Tertiary outcrop on weathered Cambrian bedrock near Strathalbyn

VOLUME II

FIGURES

<u>Fig. No.</u>	<u>Title</u>	<u>Drawing No.</u>
1	Locality Plan	S12542 -
2	The Murray Basin	S12543
3	Elevation of Cambrian basement	78-127
4	Geological plan	72-96
5	Tertiary and Quaternary sediments - geological section A-A'	77-1072
6	Tertiary and Quaternary sediments - geological section B-B'	78-257
7	Quaternary sediments - geological section D-D'	78-259
8	Quaternary sediments - geological section F-F'	78-261
9	Locality map and legend for geological sections	78-134
10	Contours of elevation of top of Tertiary Limestone	78-128
11	Isopach map of Quaternary sediments	78-125
12	Sand and silt content in Quaternary units	78-126
13	Area of irrigated lucerne in 1971	76-788
14	Land use in 1949	77-397 -
15	Land use in 1976	76-789 -
16	Average monthly rainfall and evapotranspiration	77-1067 -
17	Catchments of Bremer and Angas Rivers	S13235
18	Salinity-time graphs for the Bremer River	75-675
19	Salinity-time graphs for the River Angas	75-676
20	Unconfined aquifer potentiometric contours, August 1976	76-924 -
21	Unconfined aquifer potentiometric contours, March 1977	77-1070 -

FIGURES (continued)

<u>Fig. No.</u>	<u>Title</u>	<u>Drawing No.</u>
22	Unconfined aquifer - contours of depth to water table	78-122
23	Soil moisture characteristics for BRM37 and FRL 62	78-139
24	Water content versus depth for BRM37 and FRL62	78-139
25	Water content differences for BRM37 and FRL62 for a change in water table of 3 metres	S13236
26	Unconfined aquifer - selected hydrographs	S13234
27	Unconfined aquifer approximate salinity zones	77-1069 -
28	Confined aquifer potentiometric contours, March, 1977	77-396 -
29	Confined aquifer potentiometric contours, July, 1976	77-65 -
30	Plot of area of cone of depression below sea level versus time	76-787
31	Confined aquifers - selected hydrographs	S13144 -
32	Confined aquifer - flownet analysis	78-121
33	Confined aquifer - isohalsines	77-1071 -
34	Confined aquifer - salinity profiles	78-140
35	Contours of head difference between the aquifers	77-399
36	Location of staff gauges on Bremer and Angas Rivers	S9926
37	Storage changes in unconfined aquifer since commencement of irrigation	78-123
38	Diagrammatic groundwater systems before and after the commencement of irrigation	77-1068 -
39	Well construction	S13146 -
40	Salt inflow to irrigation area by lateral flow in confined aquifer	78-120

FIGURES (continued)

<u>Fig. No.</u>	<u>Title</u>	<u>Drawing No.</u>
41	Salt flow in the modern groundwater system	S13145 -
42	Stiff diagrams for various water samples	75-484
43	Piper diagrams for various water samples	75-487
44	Plot of sulphate versus chloride concentrations for various water samples	S11489
45	Locations of wells known to penetrate the confined aquifer for which samples are held in the core laboratory	76-956
46	Selected hydrograph wells for future monitoring	78-124
47	Data location plan	77-398

VOLUME III

GEOLOGICAL LOGS AND PLANS

PLANS

<u>Figure No.</u>	<u>Title</u>	<u>Drawing No.</u>
1	Locations of well logs	78-216



Frontispiece

Vineyards, vegetables and irrigated pasture on the banks
of the Bremer River near Langhorne Creek.

Slide No. 13696

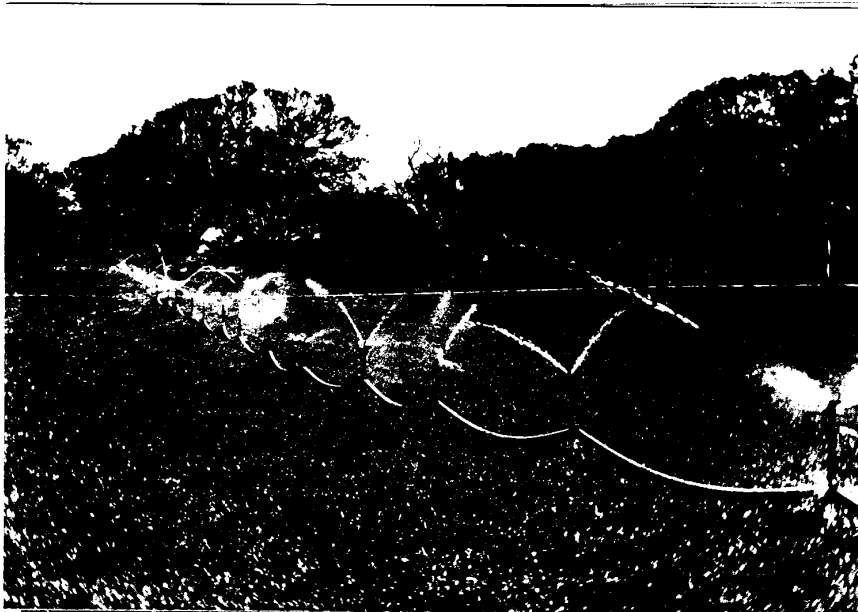


Plate 1 : Sprinkler irrigation of pasture. Slide 13695



Plate 2 : Vineyards on the flanks of the Bremer River.

Slide 13697



Plate 3 : Stock water supply pumped by windmill from the confined aquifer. Slide No. 13693



Plate 4 : Drowned mouth of the River Angas. Slide No. 13694



Plate 5 : Sandy bed of stream in lower reaches of Angas
No. 1369



Plate 6 : Water ponding in lower reach of stream in
Angas during a flow recession. No. 13698

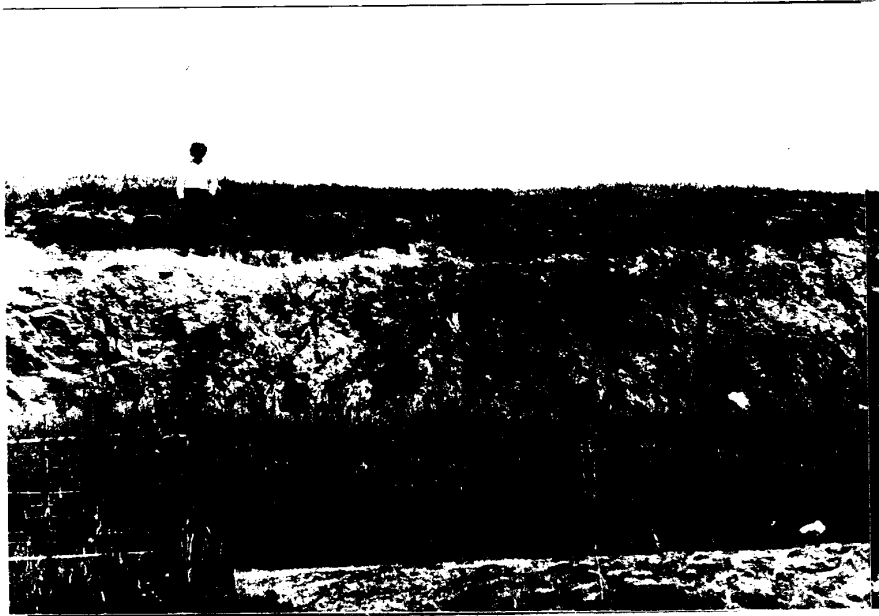


Plate 7 : Elevated Tertiary outcrop on weathered Cambrian bedrock near Strathalbyn. Slide No. 13705